



EDF

The Education for Development Foundation
มูลนิธิกองทุนการศึกษาเพื่อการพัฒนา



EDF Annual Report 2015



CONTENTS

Executive Summary	2
Resource Mobilisation Achievement	4
Key Statistical Data	6
EDF's Operation Areas in Thailand	8
Education Development in Thailand	10
EDF Board of Directors	13
Key Sponsors and Supporters	14



Executive Summary



In fiscal year 2015 (April 1st, 2015 – March 31st, 2016), EDF's total revenue for supporting the scholarship programs and development projects was at the amount of 90,001,766.69 baht, indicating a 1.38% decrease compared to that in the FY 2014. This involves breaking down into 65,783,153.48 baht for domestic revenue (0.36% decrease from FY 2014), and 24,218,613.21 baht for international revenue (4.03% decrease from FY 2014).

In FY 2015, EDF's major sponsors comprise; Thai Health Promotion Foundation 14.12 million baht; MP G11 (Thailand) Limited 8.85 Million baht; Sino-Pacific Trading (Thailand) Co., Ltd., 4.62 million baht; Shinnyo-en Thailand Foundation, 3.73 million baht; Barclays Capital Securities (Thailand) Ltd, 2.66 million baht; American Women's Club of Thailand 2.47 million baht; Embassy of the United States, Bangkok, 1.69 million baht; and UBS Securities (Thailand) Ltd., 1.32 million baht.



For academic year 2015, EDF provided 10,950 scholarships valued 27,923,400 baht to needy students in 2,156 schools covering 58 provinces in Thailand. For 28 years of the scholarship operation in Thailand, EDF has granted the total number of 344,226 scholarships, valued at a total of 558,333,199 baht for underprivileged and needy children in 5,392 schools throughout Thailand.

Not only the scholarship operation in Thailand, EDF has also expanded its scholarship support to less fortunate students in Greater Mekong Sub region (GMS) countries since 2012. In FY 2015, EDF granted 6,088 scholarships valued at a total of 15,306,852.01 baht to poor students in the GMS countries.

A handwritten signature in black ink, which appears to read "Sunphet Nilrat".

Sunphet Nilrat

Managing Director

The Education for Development Foundation (EDF)



Resource Mobilisation Achievement Fiscal Year 2015

In the FY2015, EDF had the annual revenue of 90,001,766.69 baht in total. This is accounted for 1.38% decrease from that in FY2014, dividing into 51,173,447.89 baht from scholarship revenue (5.15% increase from that in FY2014), 38,584,357.97 baht from development project revenue (8.09% decrease from that in FY2014) and 243,960.83 baht from other income. The proportion of domestic revenue is 73.09% (65,783,153.48 baht) of the total annual revenue in the FY2015.

In FY2015, EDF would like to thank sponsors and supporters especially those civil organisations, governmental organisations and corporate actors for their kind cooperation and benevolence in organizing a variety of special events and campaigns to help EDF in the public relations and fundraising. Featured special events and activities in this year includes;

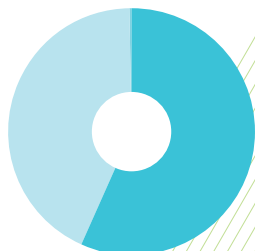
- “Lays Smile” campaign by Pepsi-Cola (Thai) Trading Ltd.
- Special fundraising event to celebrate 18th Anniversary of Tue Co., Ltd., along with a release of TUE’s self-tilted inspiration photobook named “TUE”
- “Every 100 baht donated to EDF get a 10% discount on every purchase” campaign by MUJI Retail (Thailand) Co., Ltd.
- Birthday party of Mew Nittha, a famous Thai TV actress, meeting fans and fundraising for EDF
- “Core Market” charity fair by Noble Development PCL and “Sharerity inc.” an independent group of Thai youths created to host events and organise fundraising for people who need helps
- Staff charity day by Ek-Chai Distribution System Co., Ltd, “Tesco Lotus”
- 45th Anniversary charity event of Sino-Pacific Trading (Thailand) Co., Ltd.
- “TOMS: One Day Without Shoes 2015” at EmQuartier Park by TOMS
- Charity golf by Japan Airlines : JAL Mileage Bank Charity Golf, Association of Fukuoka Prefecture Expatriates in Thailand (Fukuoka Kenjinkai) and Association of Nara Prefecture Expatriates in Thailand
- Social expo 2016 titled “Khon Thai Ko Mue Noi Year 3” at Central World Bangkok by Khon Thai Foundation in cooperation with Thai Health Promotion Foundation
- “Fight for Faith” charity activity (tug-of war-game) by Silpakorn University students
- Charity concert “5 STEPS TO SUCCESS” on the occasion of IFITIS & FINE GROUP’s 6th Anniversary
- Charity concert performed by Oosedo Chishima from Hiroshima; event organised by Club Thailand in cooperation with Siam Music Yamaha
- Matched giving program by Fidelity Information Services (Thailand) Limited
- Charity event “Konlhor Boston” for orphaned students in the deep south of Thailand fundraised by a group of Thai students studying abroad in Boston, USA
- “Eduzones Expo 2015” by I Education Zone Co., Ltd.
- 14th Anniversary event of Summit Queen Co., Ltd.
- EDF donor charity soccer for orphaned in the deep south of Thailand





Key Statistical Data Fiscal Year 2015

Chart 1: Comparison of total revenue between Fiscal Year 2014 and 2015



Fiscal year 2015

Scholarship	51,173,447.89	Baht
Development Project	38,584,357.97	Baht
Other income	243,960.83	Baht

Total 90,001,766.69 Baht

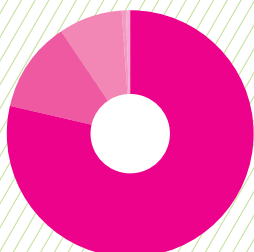


Fiscal year 2014

Scholarship	48,667,619.32	Baht
Development Project	41,979,913.64	Baht
Other income	610,788.76	Baht

Total 91,258,321.72 Baht

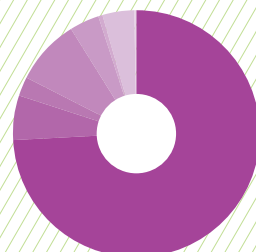
Chart 2: Number of Scholarships categorised by educational level of beneficiaries, Academic Year 2015



Lower Secondary	8,621	Units
Upper Secondary / Vocational Education	1,309	Units
Elementary	901	Units
Higher Education	85	Units
Pre-elementary	34	Units

Total 10,950 Units

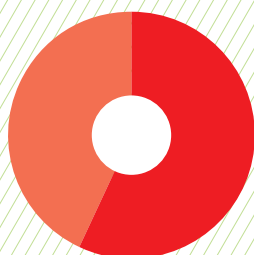
Chart 3: Number of scholarships categorised by scholarship program, Academic Year 2015



Lower Secondary Program	8,127	Units
Upper Secondary and Vocational Program	658	Units
Disabled Student Program	275	Units
Orphan Students in the three southernmost provinces Program	930	Units
AWC Program for female students	420	Units
Shinnyo-en Foundation Scholarship Program	71	Units
Students in Fisher's Family Program	460	Units
Other Programs	9	Units

Total 10,950 Units

Chart 4: Source of Scholarship Revenue, Academic Year 2015



Domestic

● Individual	1,708 Donors	4,489 Scholarships
● Organisation /Corporation	182 Donors	3,385 Scholarships

Total	1,890 Donors	7,874 Scholarships
--------------	---------------------	---------------------------

International

● Individual	1,412 Donors	2,099 Scholarships
● Organisation /Corporation	228 Donors	977 Scholarships

Total	1,640 Donors	3,076 Scholarships
--------------	---------------------	---------------------------

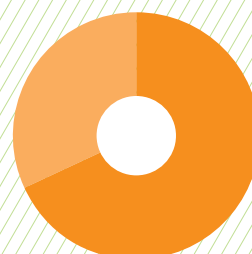


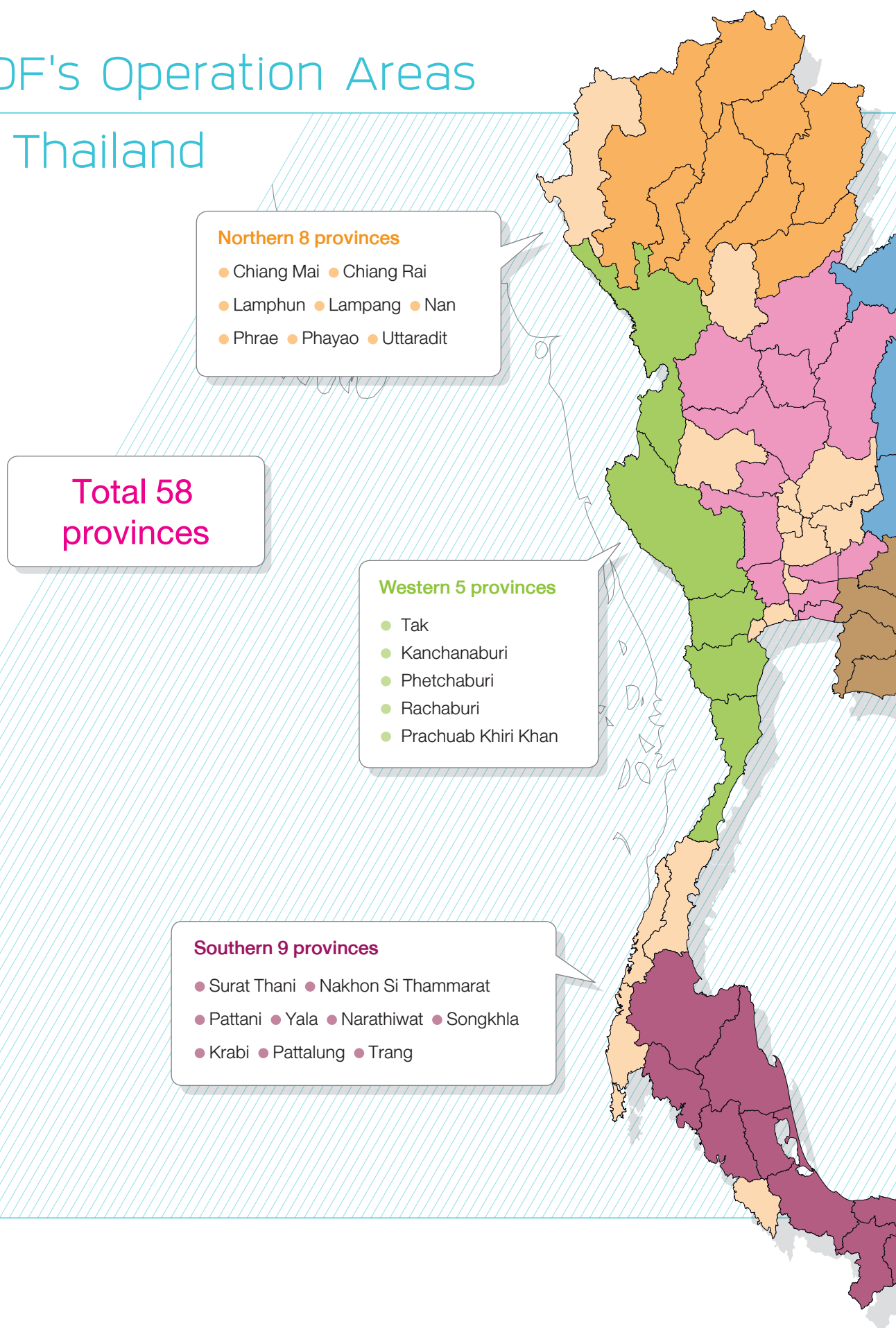
Chart 5: Project Funding Support categorised by type of project and number of beneficiaries, Fiscal Year 2015

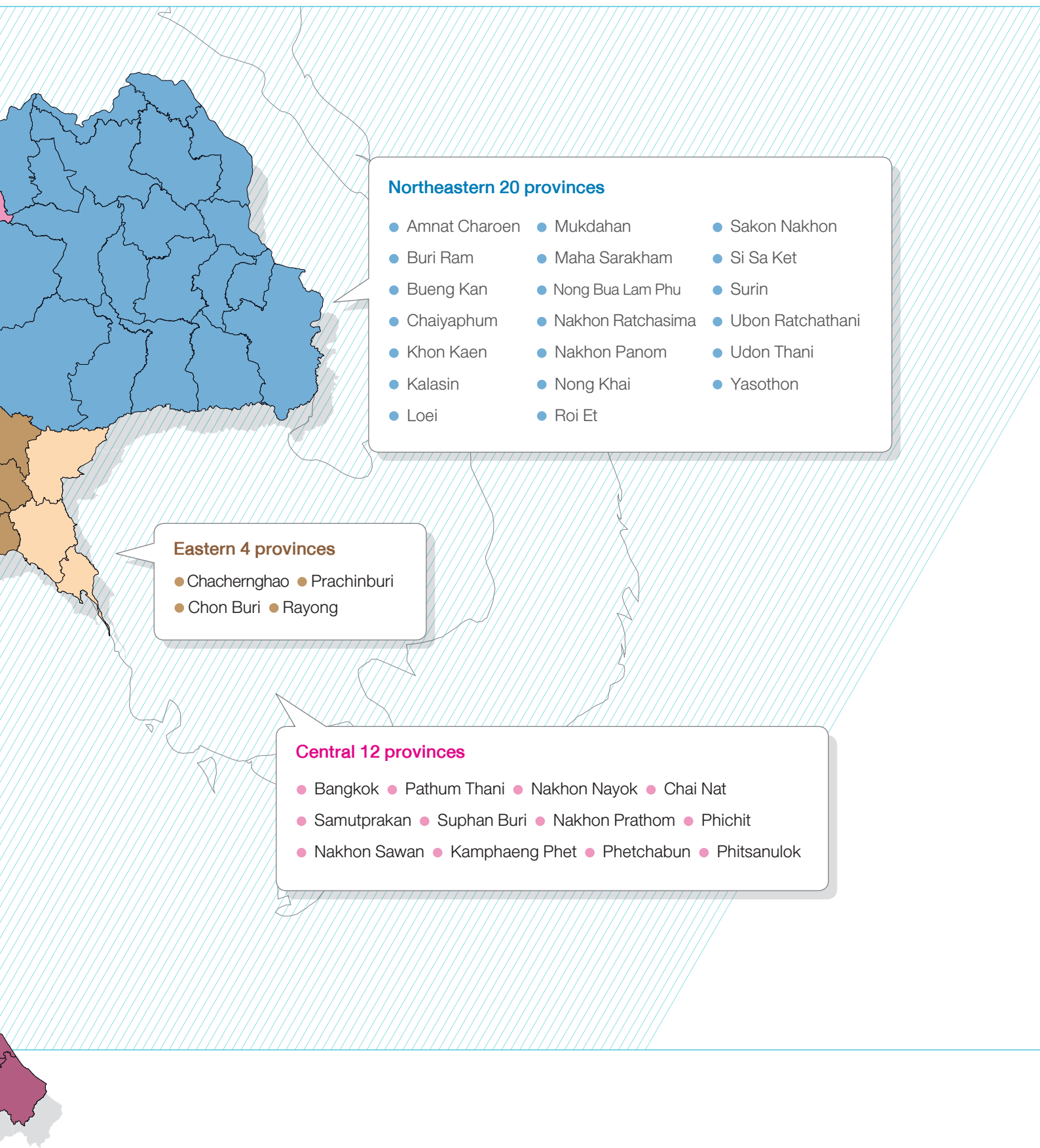


Type of Project	Supported funds (baht)	Beneficiary schools	Beneficiary students
● Health Promotion	11,312,801.78	431	88,400
● Agriculture and Career Development	1,188,100	36	10,800
● Education and Student Capacity Improvement	17,821,044.20	144	31,075
● Study Trip	973,269.54	8	2,300
● Present Set Project	267,799.30	15	1,617
● International Cooperation and Development	7,021,343.15	158	6,577
Total	38,584,357.97	792	140,769



EDF's Operation Areas in Thailand





Northeastern 20 provinces

- Amnat Charoen
- Buri Ram
- Bueng Kan
- Chaiyaphum
- Khon Kaen
- Kalasin
- Loei
- Mukdahan
- Maha Sarakham
- Nong Bua Lam Phu
- Nakhon Ratchasima
- Nakhon Panom
- Nong Khai
- Roi Et
- Sakon Nakhon
- Si Sa Ket
- Surin
- Ubon Ratchathani
- Udon Thani
- Yasothorn

Eastern 4 provinces

- Chachemghao
- Chon Buri
- Prachinburi
- Rayong

Central 12 provinces

- Bangkok
- Pathum Thani
- Nakhon Nayok
- Chai Nat
- Samutprakan
- Suphan Buri
- Nakhon Prathom
- Phichit
- Nakhon Sawan
- Kamphaeng Phet
- Phetchabun
- Phitsanulok



Education Development in Thailand

Scholarship Program

EDF scholarship program aims to promote the access to education for underprivileged children in Thailand so that they can have assurance for the better future and gain knowledge to be self-reliant and escape from the vicious cycle of poverty. At present, EDF scholarship provision is covering all levels of educational support for less fortunate children from pre-elementary until higher education. Besides, there are special scholarship programs for students with disabilities while the “Under the Same Sky” scholarship program aims to support orphaned students who lost their parents due to the unrest in the 3 southernmost provinces of Thailand. In 2015, EDF increased its supports to needy vocational school students for 55 scholarships, totaling 222,000 baht.

Since 1988, EDF has provided 344,226 scholarships to underprivileged children in Thailand, totaling 558,333,199 baht. In 2015, EDF handed 10,950 scholarships to the students in need at different education levels, totaling 27,923,400 baht.



Development Project

Further to scholarship programs, EDF has initiated educational development projects that aim to promote appropriate environment for the students in rural schools. With school-based development model, schools are the development center while students are the inter-mediators who then expand the project activities throughout their families and communities. As its heart, every project focuses on sustainable development, community participation and capacity building. Featured EDF's development projects are shown as follows:

Education Development and Student Capacity Improvement

Aims to improve teaching and learning environment both in and out of the classroom to empower the students to learn and reach their full potential with better quality of lives which includes school facility improvement such as construction and renovation of library and restrooms, computer donation and training, and bicycle lending program.

Education development and student capacity building projects in the FY2015 comprises;

- Mubadala Petroleum Integrated Development Project (MPID), sponsored by MP G11 (Thailand) Co., Ltd.;
- English Access Alumni Camp sponsored by Embassy of the United States, Bangkok
- Sino-Pacific 45th Anniversary Project, scholarship program for high school students and water purification system at 22 schools, sponsored by Sino-Pacific Trading (Thailand) Co., Ltd.
- Internet Friendship Project, sponsored by The Japan Foundation



Agriculture and Career Development

Aims to support agricultural and career skill development projects in rural needy schools to promote the agricultural and necessary career skills for their better future career option. Moreover, the project's by-products can be used to support school lunch program, and generating income for participating students.

Agriculture and career development projects in the FY2015 include Barter Between Brothers Project (BBB) and One School One Project (OSOP).

Health Promotion Program

Aims to promote health care and sanitation in rural schools so that students will be healthy either physically and mentally which will allow them to learn things wisely. Furthermore, participating students are expected to help promote knowledge

of appropriate health care and sanitation to their families and communities.

Health promotion programs in FY 2015 are as follows:

- Great Fruits Good Veggies (Season 2); aims to encourage the children to have proper meals with protein, vegetable and fruits at the recommended amount per day, according to Bureau of Nutrition's standard.
- TOMS: One for One; 38,000 pairs of shoes giving program for needy students in Ubon Ratchathani Province along with the training on sanitation education, tips on foot care, illnesses caused by walking on bare foot.

Study Trips

To promote informal learning experiences for both Thai and foreign university and school students through the visit to EDF operation

areas and learn how EDF works to improve quality of lives of less fortunate children and people. Participating students will have chance to join the cultural exchange activities, as well as to explore the way of life of rural Thai communities and home stay with local people.

In FY2015, participants from three universities came to Thailand to attend the study trips with EDF, including those from Wakayama University which sent 15 university's members to attend the field trip in Buriram Province, Ritsumeikan Asia Pacific University (APU) which sent 16 members to join the internship program with Princess Chulabhorn's College, and University of Washington which sent 20 members to explore the way of life of rural Thai people as well as to join cultural exchange activity with the school in Sakon Nakhon Province.



Remarkable projects in FY2015

Great Fruits Good Veggies (Season 2)

Sponsored by Thai Health Promotion Foundation, the project aims to encourage students to improve eating habits at 147 schools in the 10 provinces of Pathum Thani, Prachuab Khiri Khan, Nong Khai, Bueng Kan, Nakhon Phanom, Mukdahan, Songkhla, Pattalung, Trang and Krabi.

Mubadala Petroleum Integrated Development Project (MPID)

Continued in the 3rd year, MPID aims to improve quality of life of children and fishermen in the three districts of Songkhla Province; Mueang Songkhla, Sating Phra and Singha Nakhon, by using "School-based development" approach together with community participation under the concept of sustainable development.

Other than improvement of education materials and school facilities, the program focuses on capacity building and vocational training through the activities of integration into the 8 learning areas, Manorah Camp, Leadership Camp and Knowledge Management Seminar in order to prepare target schools to be ready for becoming communities' learning centers in cultural, educational and economic development perspectives.

English Access Alumni Camp

Embassy of the United States, Bangkok with EDF organised English camp for high school students in Chiang Mai Province under English Access Alumni Program to create opportunities and confidence in English communication especially communication with native speakers by focusing on the topic of "Active Citizens" which include the stations of listening, speaking, reading, writing and leadership building, problem solving, improving teamwork, critical thinking, volunteering, learning how to be open-minded, adapting and understanding of cultural difference and learning new things to become forces that drive their communities forward.

Internet Friendship Project

Sponsored by The Japan Foundation, the project sees benefits of online communication among students in the ASEAN countries to communicate with the Japanese students. The ideas of education, life, culture and tradition of each country can be exchanged and learned.

Benefits from online communication between Thai and Japanese students are as follows:

- Opportunity –students share new experiences through conversation;
- Friendship – meet foreign friends and build good interrelationship;
- Language – uses of English and Japanese languages to confidently communicate at situations;
- Society – cultural exchange and learn about way of lives of the Japanese;
- Self-development – increase analytical thinking skill by creating innovative contents;
- Technology – gain more confidence using up-to-date devices.

EDF's

Board of Directors



**Col. Somkid
Sreesangkom**

Chairman



**Mr. Terumasa
Akio**

Vice Chairman



**Mr. Udorn
Tantisoonthorn**

Director



**Dr. Panom
Pongpaibool**

Director



**Dr. Thongchai
Chewprecha**

Director



**Mr. Chatchai
Yenbamroong**

Director



**Mr. Sakda
Sreesangkom**

Director



**Ms. Nartrudee
Nakornvacha**

Director, Secretary and
Treasurer



**Mr. Sunphet
Nilrat**

Managing Director



Key Sponsors and Supporters Fiscal Year 2015

- Thai Health Promotion Foundation
- Sino-Pacific Trading (Thailand) Co., Ltd.
- Barclays Capital Securities (Thailand) Ltd
- Embassy of the United States, Bangkok
- The Mattel Children's Foundation.
- Green Club
- Pepsi-Cola (Thai) Trading Co., Ltd.q
- Advanced Computer Eyes Co.,Ltd.
- The Crown Property Bureau
- TUE Co., Ltd.
- Summit Queen Co., Ltd.
- SEAMICO Securities Public Co., Ltd.
- MP G11 (Thailand) Limited
- Shinnyo-en Thailand Foundation
- American Women's Club of Thailand
- UBS Securities (Thailand) Ltd.
- MUJI Retail (Thailand) Co., Ltd.
- TOMS
- Bangchak Petroleum Public Company Limited
- TTK Logistics (Thailand) Co.,Ltd.
- Macquarie Group Foundation
- Thai Yamaha Motor Co., Ltd.
- Hirose (Thailand) Ltd.



EDF Annual Report 2015

**EDF**

The Education for Development Foundation
มูลนิธิเพื่อการพัฒนาเพื่อคนส่วนน้อย

The Education for Development Foundation (EDF)

Kasetsart University Alumni Building , 3rd Floor

50 Phaholyothin Rd. Jatujak Bangkok 10900, THAILAND

Tel : [+662] 579-9209-11 Fax : [+662] 940-5266

E-mail : public@edfthai.org



www.edfthai.org